



MINISTRY OF FOREIGN AFFAIRS



PROFILE OF THE MINISTRY

- **MISSION, VISION AND VALUES**
- **FUNCTION**
- **ORGANIZATION**
- **ADMINISTRATION**



MISSION



- **To formulate, coordinate and implement foreign policy initiatives, addressing the issue areas of Economic, Human and National Sovereignty and the Preservation of Territorial Integrity for all Belizeans.**



VISION



- **To enhance the quality of life of Belizeans through the proactive and effective promotion, protection and coordination of Belize's interests in the bilateral, regional and multilateral diplomatic spheres**



VALUES



- **To promote ethical behavior, accuracy and precision in tasks performed, integrity in individuals and accountability to the Belizean Government and the Belizean public.**



LEGISLATION



- **Constitution of Belize**
- **Public Service Regulations 2001**
- **Statutory Instrument No. 145 of 1992 – Government Workers Rules**
- **Financial Orders of 1965**
- **Stores Orders of 1968**
- **Control of Public Expenditure Handbook**



LEGISLATION CONTINUED



- **Substantive Laws of Belize**
 - **Chapter 17 – Caribbean Community**
 - **Chapter 22 – Consular Convention**
 - **Chapter 23 - Diplomatic Privileges and Consular Conventions**
 - **Chapter 24 – United Nations (Personnel) Immunities & Privileges**
 - **Chapter 24.01 – United Nations Resolutions and Conventions**
 - **Chapter 24.03 – Return of Stolen Vehicles (Belize/USA)**
 - **Chapter 161 – Belizean Nationality**
 - **Chapter 164 – Passport**

MAIN FUNCTIONS

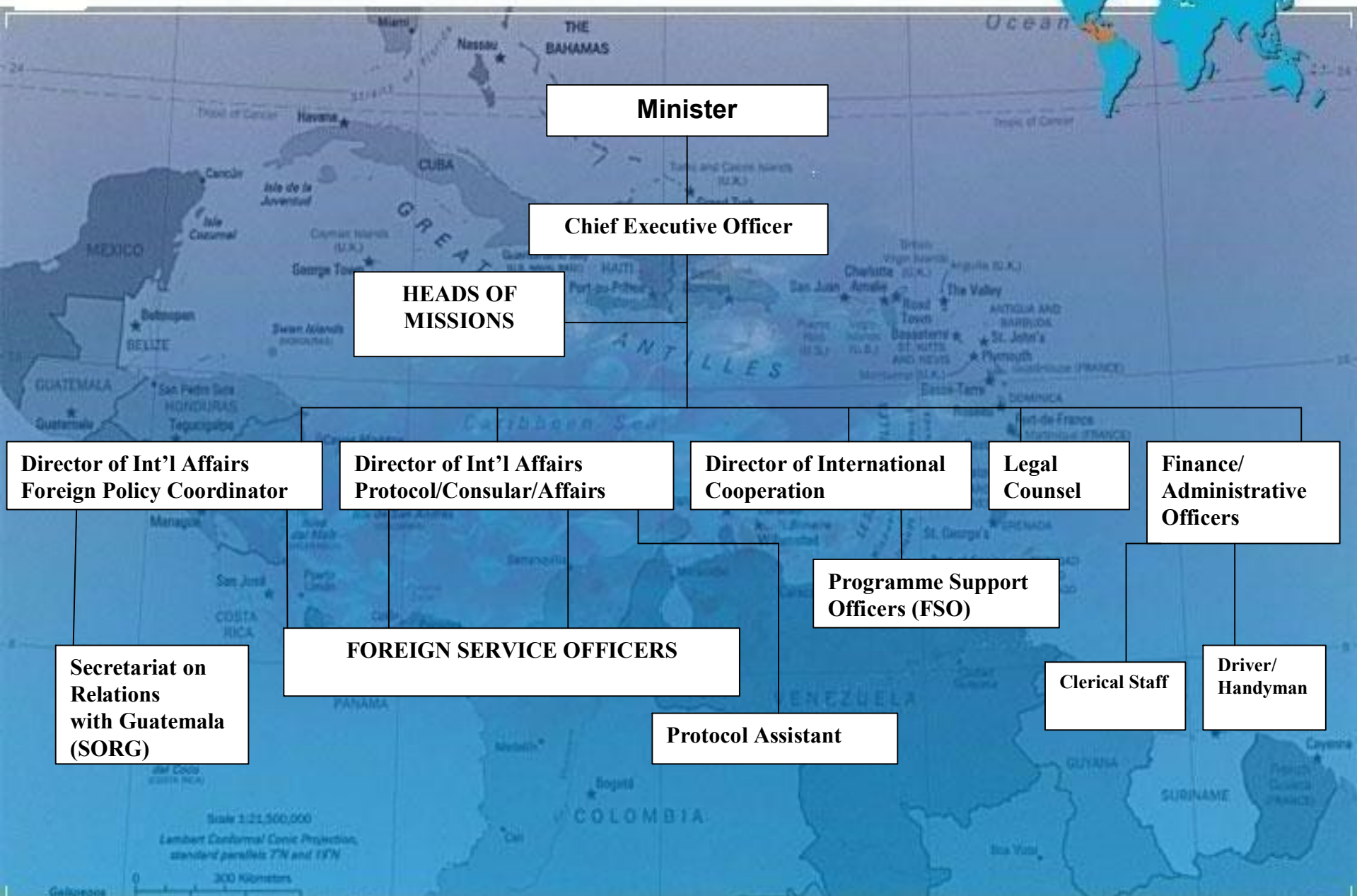


- **CONSOLIDATING OUR SOVEREIGNTY**
- **PRESERVING OUR TERRITORIAL INTEGRITY**
- **PROTECTING OUR NATIONAL INTERESTS**

- **REGIONAL, BILATERAL AND MULTILATERAL REPRESENTATION**
- **INTERFACE WITH INTERNATIONAL BODIES**
- **PROTECTING BELIZEANS ABROAD**



MINISTRY OF FOREIGN AFFAIRS



Minister

Chief Executive Officer

HEADS OF MISSIONS

**Director of Int'l Affairs
Foreign Policy Coordinator**

**Director of Int'l Affairs
Protocol/Consular/Affairs**

**Director of International
Cooperation**

**Legal
Counsel**

**Finance/
Administrative
Officers**

**Secretariat on
Relations
with Guatemala
(SORG)**

FOREIGN SERVICE OFFICERS

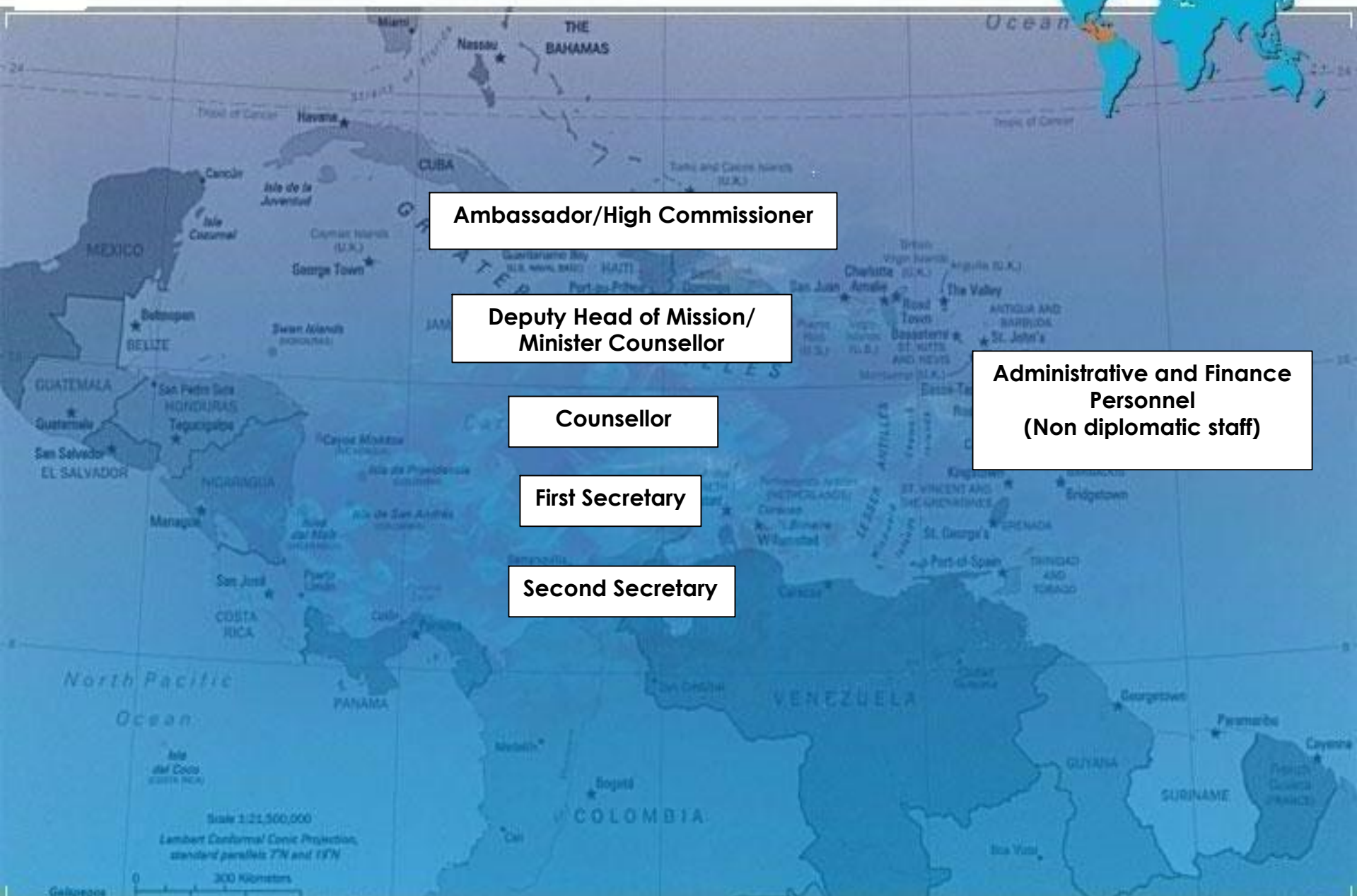
**Programme Support
Officers (FSO)**

Protocol Assistant

Clerical Staff

**Driver/
Handyman**

EMBASSIES/HIGH COMMISSIONS OF BELIZE



Ambassador/High Commissioner

**Deputy Head of Mission/
Minister Counsellor**

Counsellor

First Secretary

Second Secretary

**Administrative and Finance
Personnel
(Non diplomatic staff)**

Scale 1:21,500,000
Lambert Conformal Conic Projection,
standard parallels 7°N and 15°N

0 300 Kilometers
Galapagos

DIRECTORATES



❖ POLICY

❖ CONSULAR AND PROTOCOL

❖ TREATIES AND LEGAL AFFAIRS

❖ ADMINISTRATIVE AND
BUDGETARY CONTROL



